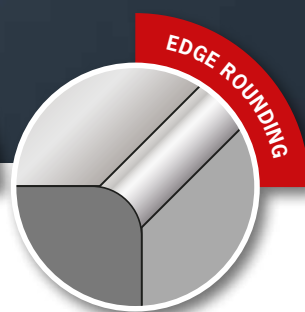


**QUALITY IN EVERY CLASS**

**THE NEW GENERATION**

**BDS MASCHINEN**  
MADE IN GERMANY



**BEVELLING AND CHAMFERING MACHINES**

Edition 2017/2018

**BDS**  
MASCHINEN

# Next-generation BDS Beveling & Chamfering Machines

## STATE OF THE ART

## REDEFINED

**Series  
EKF 300**

**Series  
EKF 600**

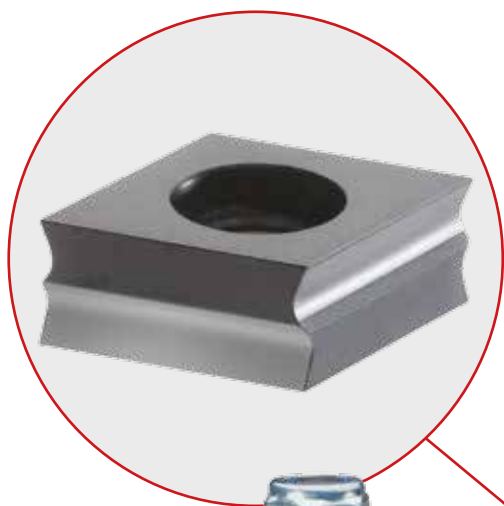
**Series  
EKF 500**

**T**he new BDS Series of Beveling Machines are tailor made to meet the requirements of every operator. With the current addition of 4 new Chamfering & Deburring machines, the EKF series now consists of 3 performance categories namely, EKF 300, 400 & 500 Series. They deliver optimal results in a short amount of time, be it machining metal components made of steel, stainless steel, non-ferrous metals, brass or even synthetic materials. All machines can produce internal and external radii.

The new milling technology from BDS produces the best results with comfortable handling

The new tangential plate configuration on the milling heads ensures low-impact and low-vibration machining even at lower speeds. A wide range of materials can be machined easily with the variable speed control & full wave control electronics in combination with the strong motor output. The new inserts with four cutting edges also make machining easier.

- ▶ Normal steel
- ▶ Aluminium
- ▶ Stainless steel
- ▶ Non-ferrous metal





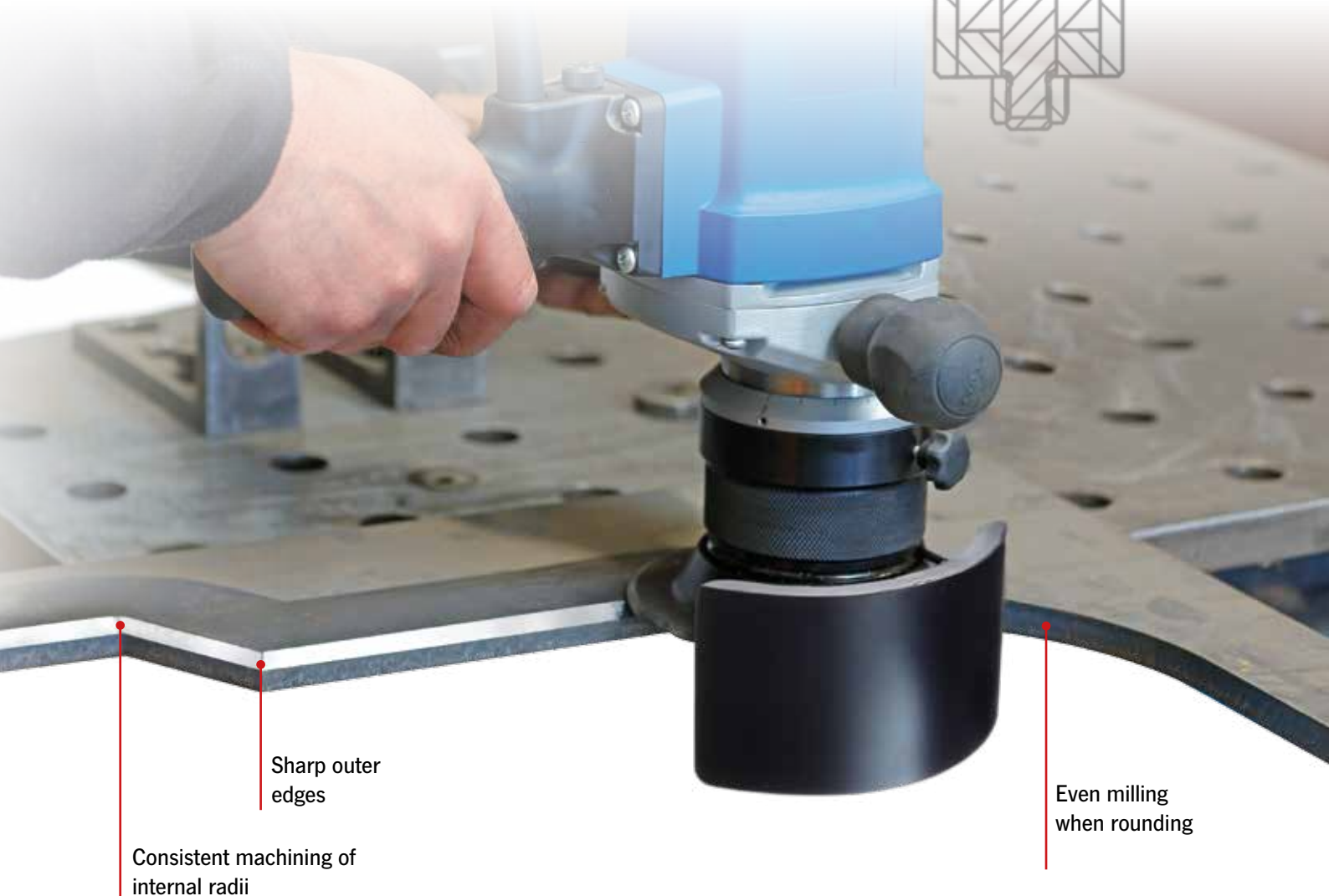


ROTATING MILLING DISC

**A new gear mechanism redesigned especially for the new EKF series delivers maximum stability.**

The double bearing in the working spindle – angular ball bearings in tandem – ensures precise concentricity and stability. The rotary disc with recirculating bearings reduces friction resistance and energy consumption.

- ▶ New, unique tangential plate configuration
- ▶ No impact jarring when operating at low speeds
- ▶ Clean milled edges, even in internal and external radii
- ▶ Ideal for weld seam preparation



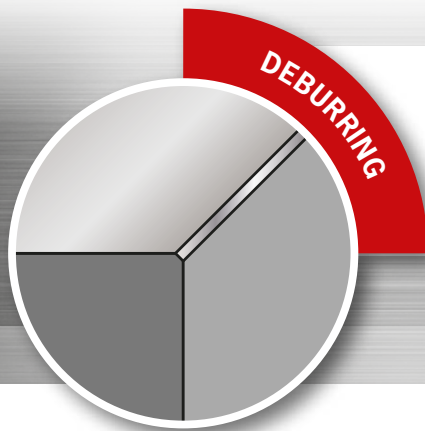
Sharp outer edges

Consistent machining of internal radii

Even milling when rounding

# Our edges are clear.

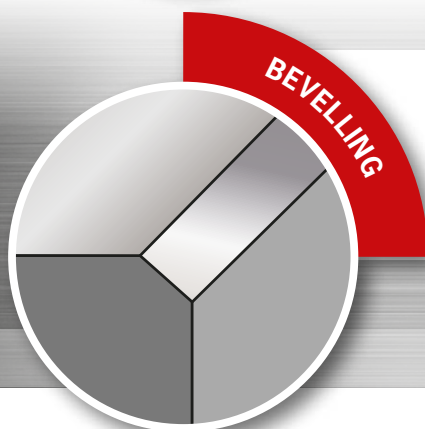
BDS incorporates new technology with no compromises, for milled edges of outstanding quality in many applications:



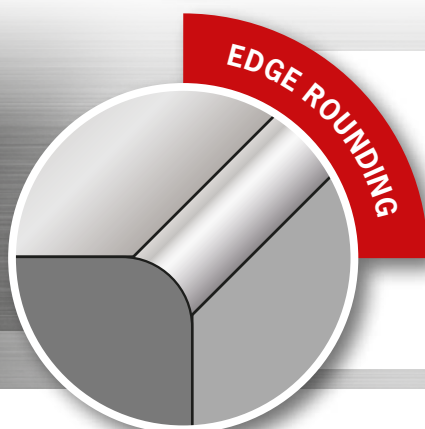
- ▶ Clean, even milled edge
- ▶ Easy to use
- ▶ Exact setting of chamfer width



- ▶ Even opening angle
- ▶ Easy to use with low-strength materials
- ▶ Weld seam preparation on almost all possible contours



- ▶ Protect against injuries
- ▶ Improve the appearance of components



- ▶ Indispensable for corrosion prevention
- ▶ Coating does not crack once dry
- ▶ Better adhesion of paint and powder coating
- ▶ Rounded edges are indispensable on components that are often handled



# EKF 300 Series

The best entry-level series for professional chamfering & deburring operations.

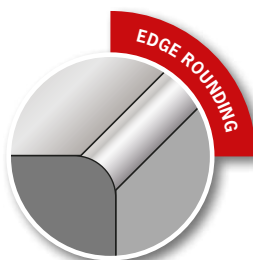
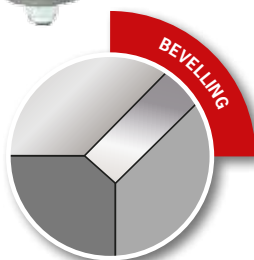
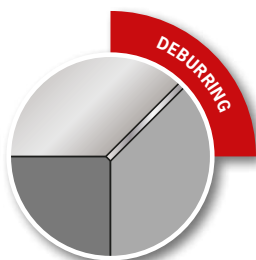
THE HANDY

ALL-ROUNDER



Compact motor with 1500 W output

Exact chamfer adjustment



Technical data	EKF 300	EKF 450	EKF 452
Chamfer angle	30°	45°	Radius 2.5 mm
Chamfer width	0–5 mm	0–6 mm	Radius 2.5 mm
Cutter type	ZFR 300.3	ZFR 450.3	ZFR 452.3
Milling tool	Screw-in milling cutter with three carbide inserts		
Dimensions (LxBxH)	310 × 295 × 138 mm		
Approx. net weight	4.6 kg	4.6 kg	4.6 kg
Voltage (see nameplate)	220–240 V/50–60 Hz and 110–125 V/50–60 Hz		
Motor output	1500 W	1500 W	1500 W
Speed	6000 rpm	6000 rpm	6000 rpm
Feed	Manual	Manual	Manual
Protection type	IP 20	IP 20	IP 20

Scope of delivery	EKF 300	EKF 450	EKF 452
Machine	EKF 300	EKF 450	EKF 452
Milling cutter	ZFR 300.3	ZFR 450.3	ZFR 452.3
Carbide inserts	SHM 200	SHM 200	SHM 202
Hook wrench	34/36	34/36	34/36
Torx screwdriver	TX 9	TX 9	TX 9
Spanner	SW 22	SW 22	SW 22
Carry case	✓	✓	✓
Operating instructions	✓	✓	✓
Warranty card	✓	✓	✓

Other optional accessories are available on page 11



# EKF 500 & EKF 600 Series

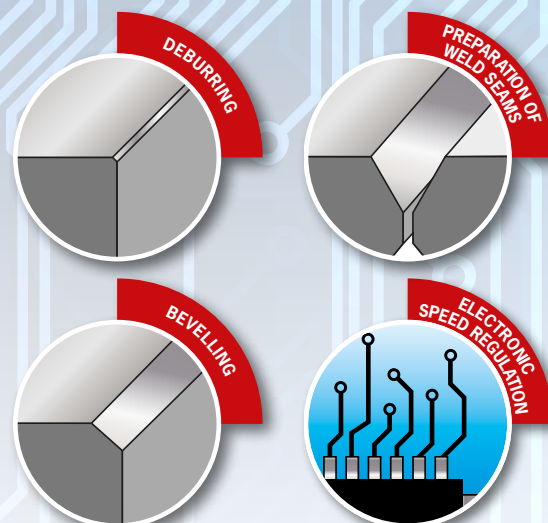
The high end top of the line series.

Compact series with variable speed & full wave control electronics.

## FULL POWER AHEAD

## VARIABLE SPEED CONTROL

## NEW MILLING TECHNOLOGY



The new EKF 500 & 600 series from BDS is designed for maximum performance and optimal comfort. With the new milling head technology, the EKF machines can also operate at low speeds without jerking or jumping. The result is optimally milled edges, even when rounding. The EKF machines are ideal for deburring, bevelling and weld seam preparation.

- ▶ Variable speed control
- ▶ Carbide inserts with four cutting edges
- ▶ New ergonomic design
- ▶ Revolving supporting disc

Technical data	EKF 530	EKF 545	EKF 630	EKF 645
Chamfer angle	30°	45°	30°	45°
Chamfer width	0–12 mm	0–12 mm	0–15 mm	0–15 mm
Cutter type	ZFR 530	ZFR 545	ZFR 630	ZFR 645
Milling tool	Screw-in milling cutter with six carbide inserts		Screw-in milling cutter with ten carbide inserts	
Dimensions (LxBxH)	375 × 350 × 300 mm		400 × 350 × 300 mm	
Approx. net weight	9.3 kg	9.3 kg	10.2 kg	10.2 kg
Voltage (see nameplate)	220–240 V/50–60 Hz and 110–125 V/50–60 Hz		220–240 V/50–60 Hz and 110–125 V/50–60 Hz	
Motor output	1800 W	1800 W	2300 W	2300 W
Speed	Seamless electronic speed regulation 1850–3350 rpm with full wave control electronics		Seamless electronic speed regulation 1600–3000 rpm with full wave control electronics	
Feed	Manual	Manual	Manual	Manual
Protection type	IP 20	IP 20	IP 20	IP 20

Scope of delivery	EKF 530	EKF 545	EKF 630	EKF 645
Machine	EKF 530	EKF 545	EKF 630	EKF 645
Milling cutter	ZFR 530	ZFR 545	ZFR 630	ZFR 645
Carbide inserts (Quantity)	SHM 900 (6)	SHM 900 (6)	SHM 900 (10)	SHM 900 (10)
Hook wrench (C)	45/50	52/55	52/55	58/62
Screwdriver (Torx) (B)	TX 15	TX 15	TX 15	TX 15
Spanner (A)	SW 22	SW 22	SW 22	SW 22
Carry case	✓	✓	✓	✓
Operating instructions	✓	✓	✓	✓
Warranty card	✓	✓	✓	✓

Other optional accessories are available on page 11

EKF 530  
EKF 545

EKF 630  
EKF 645

**1800  
Watt**

**2300  
Watt**

High motor output

Electronic control



45° and 30° milling angles

Milling head with ten  
carbide inserts  
(EKF 600 series)