



Edge Former - KFE 1

Properties

- Hydraulically operated deformation slider with changeable stamp
- Stretch frame with divided and changeable dies, hand operated
- Electrical control for setting up and automatic operation
- Compact design, with subframe

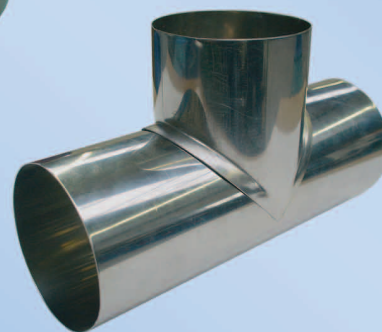


Extras

Hardened stamps and dies divided for 90° side and pipe diameters of 80 - 320 mm.

Technical data

	KFE 1
Sheet thickness	
Normal steel	1,2 mm
Stainless steel	0,8 mm
Tube diameter	80 - 320 mm
Flange height	4 - 10 mm
Tube length	250 mm
Drive power	0,75 kW
Size (LxWxH in m)	1,1 x 0,9 x 1,7
Weight	500 kg



We are available for other information to our edge former KFE 1, as well as to our other machines to you gladly at any time!

Peter Prinzing GmbH - Maschinenbau
D-89173 Lonsee-Urspring - Siechenlach 2

Fon: +49 (0) 73 36 / 96 10-0 / Fax: - 96 10 52
e-Mail: info@prinzing-online.de / www.prinzing-online.de

Representation:

Edge Former - KFE 1